

Migration patterns and property rights variation on forest frontiers in the Peruvian Amazon

PETER CRONKLETON, Ph.D.

LANDac 2018

Utrecht, The Netherlands June 28, 2018



Migration and Peru's Forest Frontiers

- ❖ Migration seen as key driver of deforestation in the Peruvian Amazon
- ❖ Lack of systematic information about migration, the characteristics of migrants or the actual effects of migration on forests

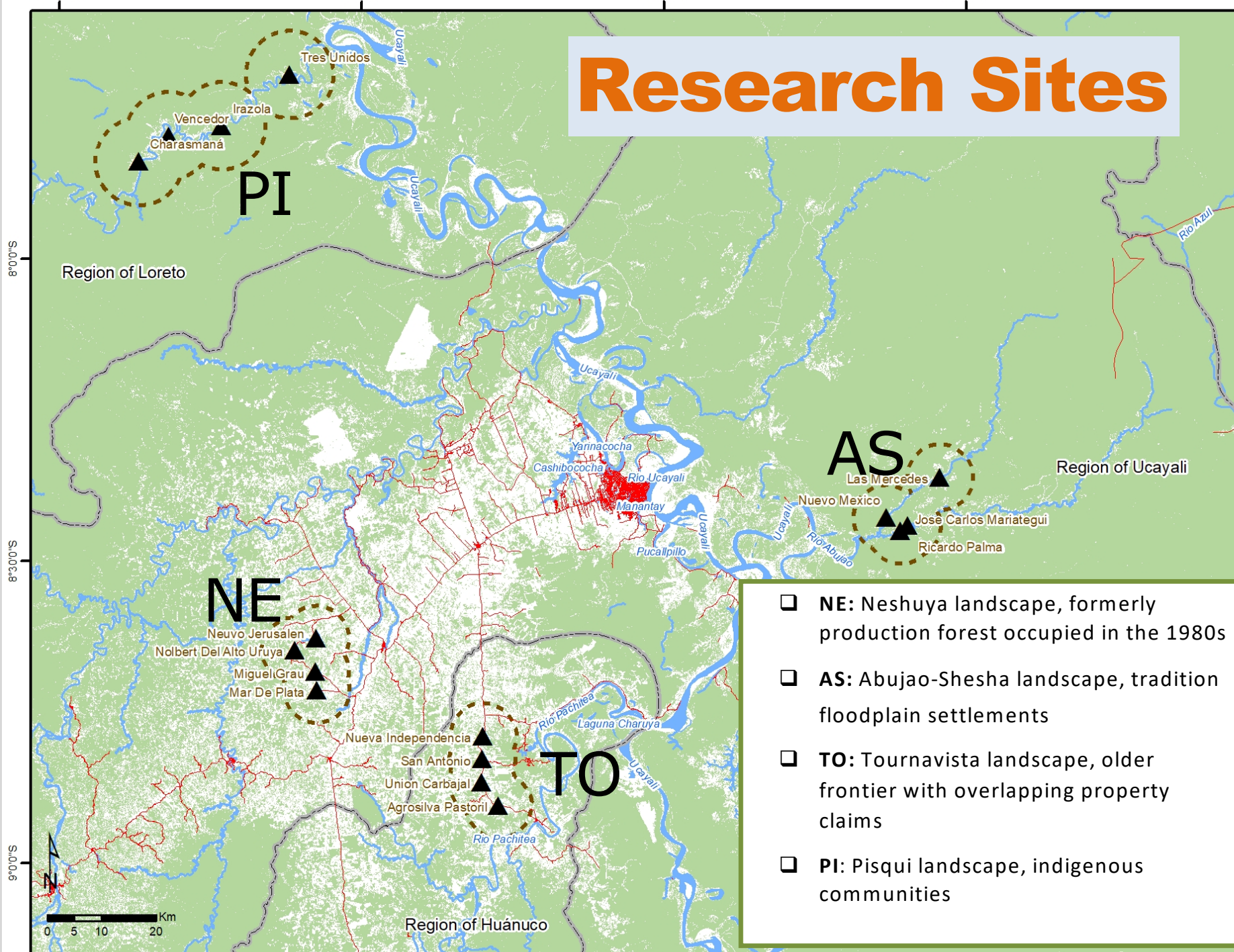


GLOBAL COMPARATIVE STUDY OF MIGRATION AND FORESTS



Funded by the German Federal Ministry for
Economic Cooperation and Development (BMZ)

Research Sites



Methodology



Focus Group Interviews

- 30 Focus groups (28 groups disaggregated by gender and 2 mixed groups)
- 200 participants

Systematic Survey

- 308 household interviews (30% of resident households)
- Landholders, landless and care takers

Key Informant Interviews



Observations from Focus Groups

❖ Occupation through spontaneous settlement

- Residents claim and demarcated properties on their own in collaboration with neighbors
- Forest lands targeted for occupation because seen as unused
- Only later did state enter to formalize property claims

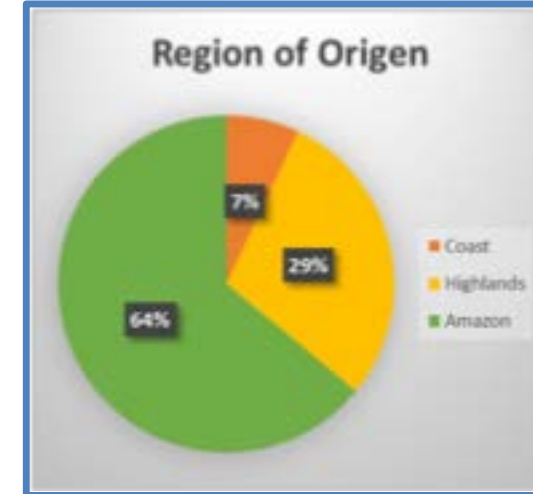
❖ Migration drivers

- Search for arable land
- Forced migration (terrorism and violence, natural disasters)
- Search for economic opportunity (wage labor, investment in land)
- Search for public services

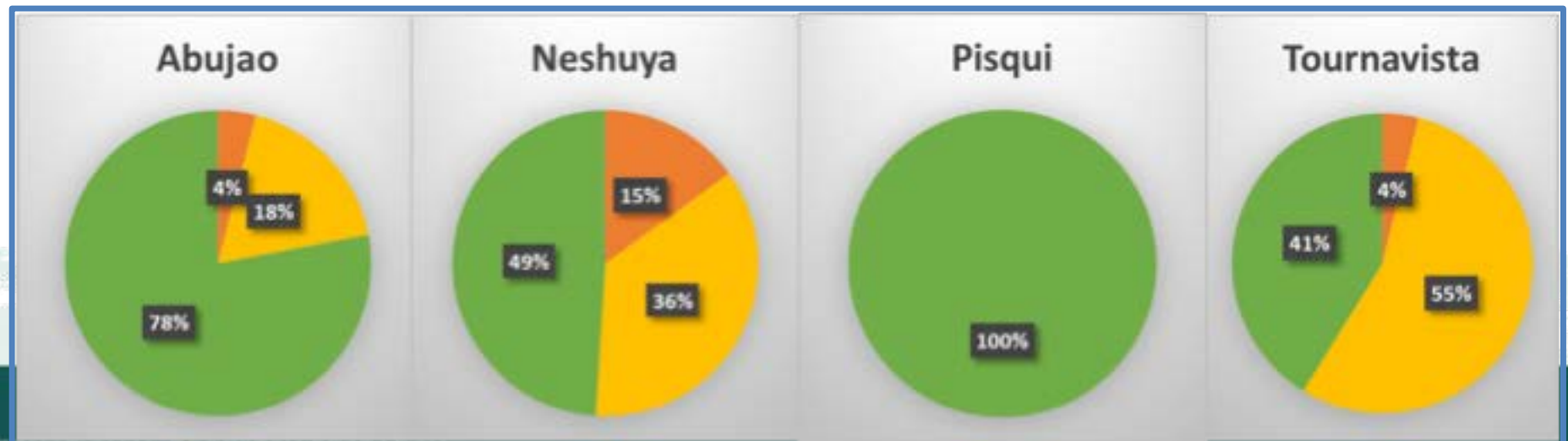


Survey Results 1

Origin of Informants



Distribution of 'Amazonians' varied





Survey Results 2

These were long term, stable settlements

- Average time informants have lived on site was 19yrs
- In PI the average was almost 3 decades
- Most villages initially settled in 1970s or 1980s
- AS landscape has longer history but was depopulated during civil unrest in 1980s and 1990s

Survey Results 3

Access to land was a main driver of migration

- Search for arable land cited as motivation for migration by most non-indigenous informants
 - NE: 67%, AS: 64%, TO: 58%
- Many non-indigenous informants had not been landless prior to migration
 - 47% had owned land at previous home
 - Of those, 50% owned less than 4 ha
 - 13 informants owned more than 50 ha





Survey Results 4

Most properties were small

- The average property size overall-- 34 ha
- Variation at landscape sites
 - **AS:** 44 ha, **NE:** 27 ha, **PI:** 5 ha, **TO:** 62 ha
- Largest individual properties -- up to 200 ha

Farming was major source of income

- Mixed agriculture/wage labor common
- Cacao prevalent source of income in NE
- Market access better in NE and TO

Estimated average monthly income

- **NE:**US\$455, **AS:** US\$178, **PI:** US\$123 **TO:** US\$324

Survey Results 5

Property rights varied in sample

Property rights:

- Ninguno
- Acuerdo comunal
- Constancia de posesión
- Compra y venta simple
- Título de Fujimori
- Compra venta notarial (TF)
- Compra venta notarial (IRP)
- Título (IRP)
- Derechos mixtos
- Otros

Formal rights varied across landscapes

- In NE 53% and AS 45% titled
- In TO 12% titled
- In PI communal title but individual plots



Survey Results 6



Perceptions of property rights security

Property rights perceived as secure. When informants were asked. . .

- Whether they felt secure
- Whether neighbors respected property limits
- Whether the State would defend their property rights
- When asked how property rights security had changed over the past five years
- 74% agreed or strongly agreed
- 88% agreed or strongly agreed
- 68% agreed or strongly agreed
- 89% believe security has stayed the same or improved



Discussion Questions

1. Could 'good enough tenure' arrangements be recognized by REDD+ programs?

- ❖ Depends on the REDD+ program
 - Carbon trading schemes would be a challenge
 - Policy reform (i.e. tenure security) could be successful
- ❖ If the focus is on local engagement to improve forest governance



Discussion Questions

2. What are the limitations of 'good enough tenure' to support REDD+ development?

- ❖ Lack of information and high local heterogeneity
- ❖ Difficult for external proponents to design conditional systems
- ❖ Not impossible – but will require changing approaches



Discussion Questions

3. Is it realistic to expect 'good enough tenure' schemes to play a role in development?

Yes

- ❖ These stakeholders often have *de facto* possession of forest frontier areas
- ❖ These schemes are adapted to local conditions and capacities; reflect local perceptions.

Conclusions

- ❖ **Spontaneous settlement has produced grassroots agrarian reform**
 - ❖ State-lands occupied by migrants
 - ❖ Later state agencies formalize claims
- ❖ **Pattern results in forest conversion**
 - ❖ Much forestland owned by state
 - ❖ Forest perceived as unused
 - ❖ Titling focused on cleared land
- ❖ **Formal property rights were goal but elusive for many**
- ❖ **The lack of formal rights did not lower perceptions of security**



THANK YOU



cifor.org
blog.cifor.org
ForestsTreesAgroforestry.org

